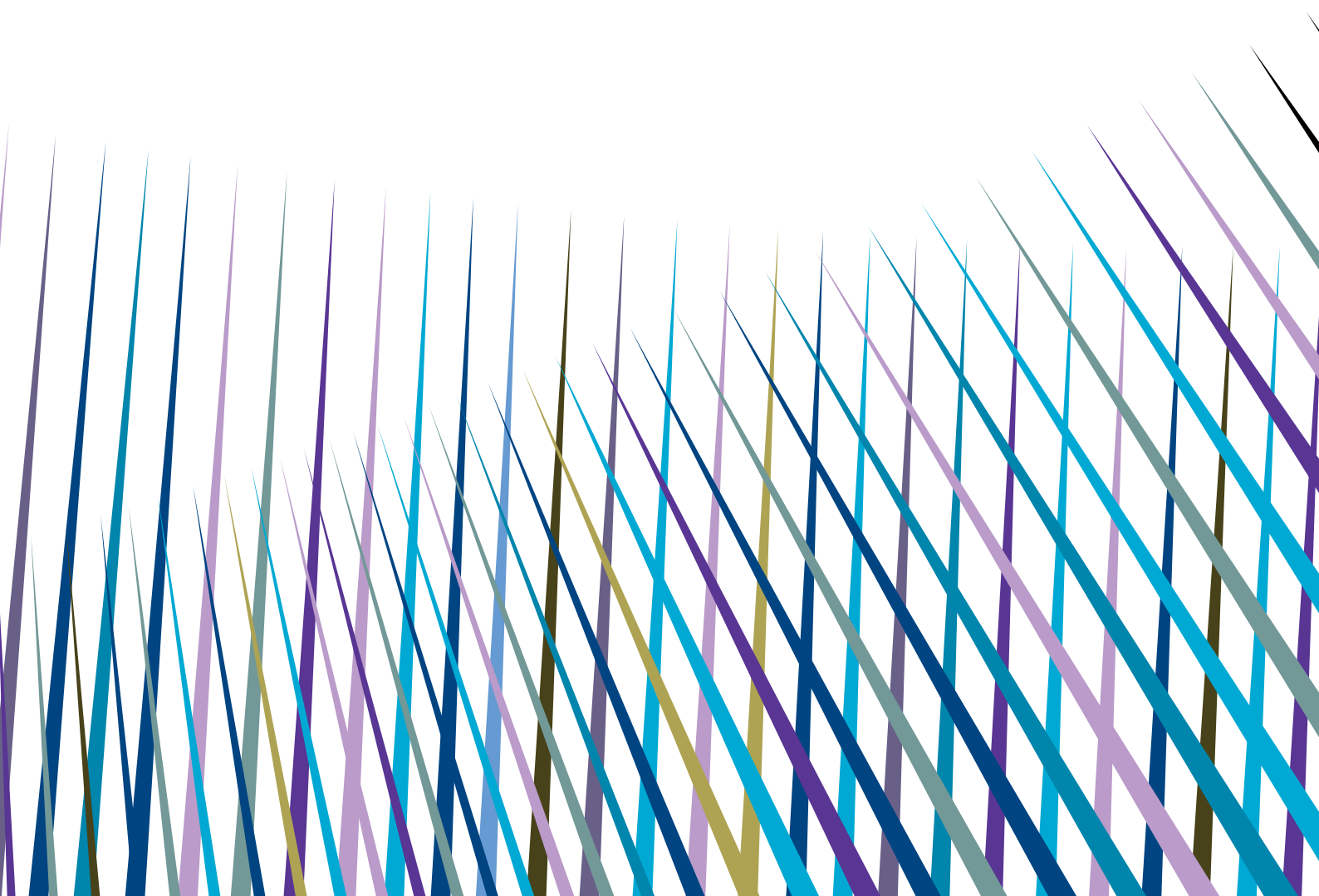


# ARCHAEOLOGY

UNDERGRADUATE STUDY 2013 ENTRY





## Key information

	UCAS CODE	TYPICAL OFFER
<b>BA Single Honours</b>		
Archaeology	V400	AAB-BBB; IB: 34-30
Archaeology with Study Abroad	V404	AAB-BBB; IB: 34-30
<b>BSc Single Honours</b>		
Archaeology with Forensic Science	F490	AAB-BBB; IB: 34-30
<b>BA Combined Honours</b>		
Archaeology and Anthropology	VL46	AAB-ABB; IB: 34-32
Ancient History and Archaeology	WC4	AAB-ABB; IB: 34-32
Ancient History and Archaeology with Study Abroad	W1K	AAB-ABB; IB: 34-32
Flexible Combined Honours	Y004	A*AA-AAB; IB: 38-34
Flexible Combined Honours with Study or Work Abroad	Y006	A*AA-AAB; IB: 38-34
Flexible Combined Honours with UK Work Experience	Y007	A*AA-AAB; IB: 38-34


For further details on all our entry requirements, please see our Archaeology pages at: [www.exeter.ac.uk/undergraduate/degrees/archaeology](http://www.exeter.ac.uk/undergraduate/degrees/archaeology)

### **STREATHAM CAMPUS, EXETER**

Website: [www.exeter.ac.uk/archaeology](http://www.exeter.ac.uk/archaeology)

Email: [hums-ugadmissions@exeter.ac.uk](mailto:hums-ugadmissions@exeter.ac.uk)

Phone: +44 (0)1392 722491/724350

 One of the things I really enjoy is the research seminars that take place within the department. There have been some really fascinating seminars by many prominent archaeologists. 

**UNDERGRADUATE IN ARCHAEOLOGY**

# Why study Archaeology at Exeter?

Archaeology at Exeter is an exciting and varied subject combining fascinating academic study with practical hands-on experience. You can study a diverse range of topics from human evolution, or the emergence of classical civilisations, to the creation of today's landscapes.

Our approach to archaeology is vibrant and interdisciplinary as we work with researchers in subjects including Ancient History, Anthropology, Biosciences, Geography, History and Earth Resources. We'll teach you to look at evidence, weigh it up, and draw your own conclusions. You'll be confident at expressing your ideas on paper and through presentations. Writing a dissertation and producing portfolios of coursework will teach you to work independently. These are transferable skills, valuable in any walk of life.

Our Single Honours BA Archaeology offers a great range of choice, while the BA Archaeology with Forensic Science is a groundbreaking degree looking at how archaeological and scientific techniques are used to investigate the past and in modern day crime investigations. We also offer Combined Honours programmes in which you can choose to study Archaeology alongside Ancient History or Anthropology. Don't worry if you haven't studied Archaeology before; our degrees are designed to quickly bring you up to speed.

All of our degree programmes include practical hands-on experience and field work in the UK or the chance to go abroad. We have large collections of artefacts and often use experiments in our teaching about ancient technologies such as flint knapping, pot making, bronze smelting and casting. Most of our teaching is about British and European archaeology, but our expertise extends across the globe with modules covering North and South American prehistory, North Africa and Asia.

Our degrees equip you for a wide range of careers, providing you with valuable skills sought by employers. You'll be in the unusual position of having studied a subject which brings together the arts and the sciences and which is practical as well as theoretical.

Our department has a relaxed, friendly atmosphere and you'll benefit from small group teaching and plenty of contact with staff. We're situated in the heart of the diverse landscape of the West Country, close to some of Britain's richest archaeological locations at Dartmoor, Exmoor and the Somerset Levels. We have well-established links within the South West, including county museums, field units, county and national park archaeologists and independent consultants who run centres presenting archaeology to the public.

Staff have wide ranging research interests covering prehistory and the ancient, medieval and modern periods in Britain, Europe and worldwide. We have specialists in past environments, landscapes, settlements, burials and artefacts. You'll benefit enormously from our research, being taught by high-quality academic staff, all of whom are internationally recognised in their fields. You'll become part of a thriving research culture feeding directly into your undergraduate teaching, to create exciting programmes and modules. Our active research has contributed to the

department's international standing; we were ranked second in the UK for world leading and internationally excellent research in the 2008 Research Assessment Exercise.

Currently we have research links and field projects in the UK and Europe (Czech Republic, Denmark, France, Poland, Romania and Russia). Ongoing research and projects are also taking place throughout the world in as well as across the wider world in Egypt, Kazakhstan, India, Tropical and Andean South America and the USA. For details of our staff research interests follow the links to 'Departmental Research' on our website at [www.exeter.ac.uk/archaeology](http://www.exeter.ac.uk/archaeology)

We also have an active student-led Archaeology Society whose activities include field trips, social events and excursions.

Highly ranked in the 2012 league tables: 6th in *The Times Good University Guide*; 5th in *The Complete University Guide*

Top 10 for Overall Satisfaction in the National Student Survey (2011)<sup>▲</sup>

2nd in the UK for world leading and internationally excellent research in Archaeology<sup>◆</sup>

Top 10 for graduate level employment and postgraduate study rates<sup>◇</sup>

Substantial practical and field work experience

Opportunities for professional placements and study abroad

<sup>▲</sup>based on the percentage of positive responses for full service universities

<sup>◆</sup>RAE 2008 based on the percentage of research categorised as 4\* or 3\*

<sup>◇</sup>based on proportion of UK domiciled, full-time, first degree graduates in Archaeology with a known career or study destination (HESA 2009/10)

# Degree programmes

Our Archaeology degrees enable you to explore both the academic and practical dimensions of a uniquely fascinating discipline. Building on a firm foundation of the subject provided in the first year, the degrees give you a wide variety of choice to follow your particular interests. From the microscopic analysis of ancient artefacts to the exploration of entire fossilised landscapes, from understanding prehistoric villages to recording historic buildings, the subject has something to offer everybody. As you work through your degree, you can develop your own specialisation, culminating in a dissertation supported by one-to-one tuition.

## How your degree is structured

The degrees are divided into core and optional modules, giving you the flexibility to structure your degree according to your specific interests. Individual modules are worth 15 or 30 credits each. Full-time undergraduates need to take 120 credits in each year. If you're a Combined Honours student you'll take modules worth 60 credits in Archaeology and 60 credits in your other subject in each year. If you take BA History and Archaeology with Study Abroad, you must take language modules worth at least 15 credits each year. Within Archaeology, in addition to the core modules, you can choose from an extensive range of options in all three years, examples of which are shown at the back of this brochure.

For up-to-date details of all our programmes and modules, please check [www.exeter.ac.uk/archaeology](http://www.exeter.ac.uk/archaeology)

## Single Honours

### BA Archaeology

The Single Honours BA Archaeology degree allows you to develop an in-depth knowledge about a range of periods and places, as well as the broad variety of techniques and skills that archaeologists use to engage with the past.

It doesn't matter if you don't have an A level in Archaeology – most students come

to Exeter without any prior experience in the subject. Introductory modules will quickly bring you up to speed with the key topics and principles that underpin all archaeological research and allow you to explore the history and prehistory of the world.

Archaeology at Exeter is characterised by a wide range of choice, both in the topics covered by modules and the opportunities offered for field work. Modules in Year 2 and 3 fall into two categories: themes such as Egyptology, medieval, maritime, Neolithic, Roman or Bronze Age archaeology; and hands-on techniques such as analysing artefacts, animal bones, human and plant remains or understanding the landscape through methods such as aerial survey.

You will have the opportunity to take part in field work locally, elsewhere in the UK and further afield. Field work opportunities for undergraduate students have included surveys and excavations of a late Saxon town and Norman castle in Oxfordshire, Bronze Age domestic settlements in Kazakhstan, a prehistoric Indian village in South Dakota and the prehistoric ritual landscape at Stonehenge.

You may also choose to spend the first half of your second or third year studying abroad at Augustana College, Sioux Falls, South Dakota. In Year 3, you may also elect to undertake a professional placement.

**Year 1** The first year will give you a solid grounding in the techniques of archaeology and the key topics that archaeologists study in all periods, from the earliest times to the later Middle Ages and beyond.

**Year 2** During the second year you'll take one of the field work modules then choose from a series of options. Optional modules give you the flexibility to tailor your degree to your particular areas of interest. Subjects are varied and may include specific historical periods or cultures; or examining human bones and artefacts.

**Year 3** The only compulsory module in the third year is the Dissertation which many students find the most rewarding part of

their degree. It gives you the chance to carry out independent research in an area of most interest to you. You will also choose optional modules which can include a work placement.

## BSc Archaeology with Forensic Science

The BSc in Archaeology with Forensic Science combines the study of two exciting scientifically related disciplines and allows you to develop skills in uncovering the detail of past events, particularly death and burial.

This unique programme will provide you with a sound knowledge of archaeological periods and the techniques of forensic archaeology and anthropology, including the study of human remains. You will also gain an insight into the forensic techniques used in criminal cases. You will hear from a series of experts such as scenes of crime and police officers, lawyers and ballistics specialists to understand how modern forensics are used in the investigation and detection of crime.

You don't need an A level in Archaeology as our introductory modules will quickly bring you up to speed with the key topics and principles underpinning archaeological research. In addition to modules in your specialism, you will also be able to choose options from a wide range of archaeology modules or from another discipline such as criminal law or criminology.

You will have the opportunity to take part in field work locally, elsewhere in the UK and further afield. You can choose to spend the first half of your second or third year studying abroad at Augustana College, Sioux Falls, South Dakota. In Year 3, you can also elect to undertake a professional placement.

**Year 1** Along with the general archaeological knowledge gained you will get an introduction to a selection of key scientific skills that are useful to both archaeological and forensic sciences, and participate in a simulated crime scene exercise.

**Year 2** In addition to other archaeological topics, you'll be introduced to the basic principles of the study of human remains to establish personal identity with emphasis on the characterisation of skeletal shape and size and application of demographic reference standards for age and sex determination and population affinity. This year also introduces pathological and anatomical variation applied to establishing human identity and the place of such studies within the discipline of biological anthropology. Your studies will also cover aspects of forensic sciences such as ballistics, DNA fingerprinting and drugs analysis. This includes sessions by visiting experts involved in the criminal justice system.

**Year 3** You will study the complexity and variability of funerary treatment and rituals through a series of lectures based upon a chronological development in Europe and the Near East from the Middle Palaeolithic to the Medieval period. In addition, you will examine the relationship between the funerary domain and the once living society that created it. You will also choose options, which may include a Professional Placement or a choice of a module in another discipline (eg, Criminology). Your dissertation topic may either be on archaeology or forensic archaeology.

## Combined Honours Degrees

### BA Archaeology and Anthropology

Archaeology and Anthropology are closely linked subjects and this Combined Honours degree gives you the opportunity to study their considerable common ground. Exploring people and society in the past as well as the present, you will engage with ethnographic studies of cultures around the world, explore themes such as human evolution, sexuality, art, death and war.

The archaeological side of the programme teaches you to understand the human experience through the study of physical evidence and how such evidence is gathered, analysed and interpreted. Introductory modules will quickly bring you up to speed with key topics and principles that underpin all archaeological research.

The physical anthropology aspect of the programme is taught in the Archaeology department, with focus on human remains and the means by which we understand our evolution, health, mortality and mortuary practices.

Modules focusing on social and cultural anthropology are taught within the Sociology and Philosophy department. You will learn fundamental questions about society and culture, while investigating the diversity of human life across the globe. Modules cover classic anthropological ideas concerning ritual, kinship, witchcraft, and ethnicity, and how anthropology contributes to debates on important current issues including health, war and violence, science and technology, consumption and the environment.

Modules encourage you to query views which are taken for granted; you will gain a historically and culturally informed understanding of the world, and an insight into very different human cultures. Anthropology is a dynamic discipline which is adapting to and explaining global changes.

For further details about this programme and module choices, please refer to the our website at [www.exeter.ac.uk/archaeology](http://www.exeter.ac.uk/archaeology)

### BA Ancient History and Archaeology

#### BA Ancient History and Archaeology with Study Abroad

The Ancient History and Archaeology programmes combine two distinct but overlapping disciplines which use a range of different techniques and sources to examine the past.

You will learn about the main issues in Greek and Roman history, society and political life and explore the ways in which Greeks and Romans thought about their own past. You will also be encouraged to consider the problems encountered by modern scholars seeking to access ancient history. Topics include the rise and fall of the Roman Empire, tyranny in the ancient world, the building of ancient civilisations, the portrayal of Roman emperors, and Greek poetry.

The Archaeology modules will introduce you to the techniques archaeologists use to investigate the past as well as time periods spanning from early prehistory to the Middle Ages. You will be able to choose from a wide range of optional modules covering topics such as the impact of Roman civilisation on native European cultures, Bronze Age Britain or the study of artefacts and human remains.

You will have the opportunity to take part in archaeological field work locally, elsewhere in the UK and further afield. Field work opportunities for undergraduate students have included surveys and excavations in Kazakhstan, South Dakota, Sri Lanka and Stonehenge.

No previous knowledge of Latin or Greek is required to study Ancient History.

Full details of the Ancient History modules can be found at [www.exeter.ac.uk/classics](http://www.exeter.ac.uk/classics)

## Flexible Combined Honours

This innovative Combined Honours scheme enables you to combine modules from a number of different fields of study not otherwise available through an existing Combined Honours programme. You can combine Archaeology with up to two other subjects from an extensive list of subjects. Throughout your degree you will be given regular support to help you choose the most appropriate pathway for you. Further information and the full list of available subjects can be found at [www.exeter.ac.uk/fch](http://www.exeter.ac.uk/fch)



## Learning and teaching

You'll learn through lectures, seminars, tutorials, field trips and computer-led learning. Seminars complement lectures by encouraging you to explore issues in small group discussion meetings and our first year tutorial system concentrates on study methods and core skills. You'll have 1-3 teaching hours per module per week and will need to allow for additional hours of private study. You should expect your total workload to average about 40 hours per week during term time, with at least 10 hours of this being contact time with staff.



We aim to develop your skills of analysis and interpretation as well as providing you with a wide range of transferable skills, both practical and intellectual.

You will carry out a large amount of practical work as you complete assignments and put into practice different archaeological and scientific techniques. We frequently employ experiments in our teaching about ancient technologies (eg, flint knapping, pot making, bronze smelting and casting). Everyone completes at least four weeks' practical work, usually during the first summer vacation, and we have excellent provision of technical equipment for field study, including GPS, total station theodolite and geophysical equipment.

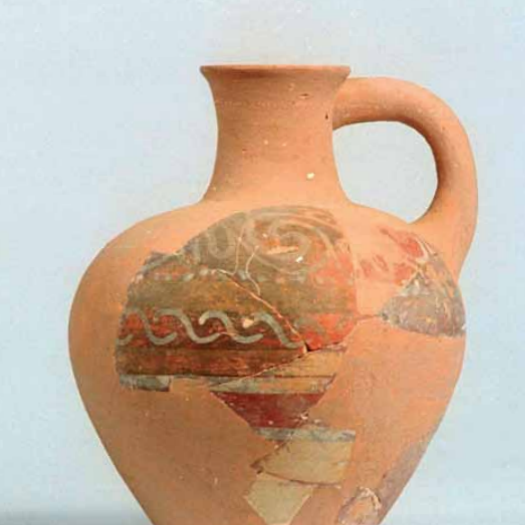
We're actively engaged in introducing new methods of learning and teaching, including increasing use of interactive computer-based approaches to learning through our virtual learning environment, where the details of all modules are stored in an easily navigable website. You can access detailed information about modules and learning outcomes and interact through activities such as the discussion forums.

### Field trips and field work

No Archaeology degree is complete without field experience. Field trips are made to local museums, archives and archaeological sites. You will also undertake at least four weeks of excavation, field work or related practical work, usually during your first summer vacation. Current projects see Exeter students engaged in archaeological field work in South Dakota, Brazil, Kazakhstan, Texas and Devon. Places will be available on these and other projects, though you may wish to go on an approved project elsewhere. You may choose to enhance your field work experience by taking a third year module, which provides opportunities for you to experience the excitement of groundbreaking international archaeological research, and increase your employability by testing your leadership, teamwork and organisational skills. There is also the possibility for students to spend half a year at a university in America. For further details, please see [www.exeter.ac.uk/humanities/archaeology/fieldwork](http://www.exeter.ac.uk/humanities/archaeology/fieldwork)

 The first thing that struck me about the department at Exeter was the emphasis placed upon the practice of archaeology. The fact that field work was compulsory at Exeter was a major plus. Elsewhere I encountered surprise that I actually wanted to learn how to get mucky in the field! 

PETER JAMESON, BA ARCHAEOLOGY



## Facilities

We have outstanding facilities that include: experimental archaeology laboratories; clean lab with fume cupboards for chemical work; a landscape archaeology project office, complete with giant scanner for maps and plans; microscope room equipped with high-spec microscopes and image processing facilities; a kiln room for ceramics and other experimental purposes; wet labs for artefact and environmental sample processing; sets of high- and low-power teaching microscopes and state-of-the-art surveying equipment (including resistivity equipment, magnetometer, differential and hand-held GPS and total station theodolite and geophysical equipment). We also have extensive reference collections of artefacts, animal bones and plant remains.

## Research-inspired teaching

Teaching that is inspired by research ensures lectures are cutting edge and you will benefit from access to the latest thinking, equipment and resources. All staff teach third year options which are linked to their own interests, which include topics as diverse as maritime archaeology and Egyptology. You'll be encouraged to participate in research projects and be able to choose dissertation topics that contribute original research to a project.

## Academic support

All students have a Personal Tutor who is available for advice and support throughout their studies. There are also a number of services on campus offering advice and information, including the Students' Guild Advice Unit. You can find further information about all the services in the University's undergraduate prospectus or online at [www.exeter.ac.uk/undergraduate](http://www.exeter.ac.uk/undergraduate)

## Study abroad

Studying for your degree at Exeter offers you the exciting possibility of spending up to one year abroad. Last year Exeter's highly successful programme helped about 400 students study at one of our 180 partner universities. You could learn a new language and experience different cultures, become more self-confident and widen your circle of friends. You could get the chance to specialise in areas that are not available at Exeter, and when it comes to a career, your skills and knowledge of another country will prove invaluable to many employers. This of course applies equally to overseas students coming to study abroad at Exeter.

The 'with Study Abroad' degrees give you an exciting opportunity to spend the third year of your degree in one of our partner universities abroad. This is part of the EU-funded Erasmus programme. Your work during the year abroad is assessed and contributes to your final degree classification and 'with Study Abroad' will be recorded on your degree certificate.

You may apply for direct entry to these degrees or, exceptionally, students with appropriate language skills can transfer from one of the other degree programmes during their second year. Details of these schemes and our partner institutions can be found on our website at [www.exeter.ac.uk/humanities/undergraduate/studyabroad](http://www.exeter.ac.uk/humanities/undergraduate/studyabroad)

For full details please check the International Office website at [www.exeter.ac.uk/international/abroad/erasmus](http://www.exeter.ac.uk/international/abroad/erasmus)

## Assessment

You'll be assessed by a variety of methods and no Archaeology module is assessed simply on the basis of exams. In addition to exams some modules require assessed essays and projects, while the practical modules are examined by the preparation of written reports, portfolios of work, oral presentations, practical assignments, field work notebooks or take-away papers to allow time for research and perhaps appropriate field or museum visits.

You must pass your first year assessment in order to progress to the second year, but the results do not count towards your degree classification. For three-year programmes, the assessments in the second and third years contribute to your final degree classification. For four-year programmes the assessments in the second, third and fourth years all contribute to your final degree classification. All students write a substantial dissertation/project in their third year. Formal exams contribute about 40 per cent of your overall assessment in the second and final years.

For full details of the assessment criteria for each module, check the undergraduate section of our website at [www.exeter.ac.uk/archaeology](http://www.exeter.ac.uk/archaeology)



## Careers

Archaeology programmes at Exeter are designed to develop your skills of analysis, assessment and interpretation as well as the production of written and oral reports. The broad-based nature of the subject and of the skills it provides give a strong grounding for a wide range of careers, not only those related to archaeology but also in the wider fields of teaching, administration and business. Some of our graduates combine their initial job with voluntary archaeological work or with further part-time study of the subject.

Your employability skills are also enhanced through a range of careers initiatives we offer that are specific to the profession, including 'professional modules' involving work experience.

The Exeter Award and the Exeter Leaders Award schemes encourage you to participate in employability related workshops, skills events, volunteering and employment which will contribute to your career decision-making skills and success in the employment market.

Exeter has an excellent reputation with graduate recruiters and our students and graduates compete very successfully in the employment market. Many employers target the University when recruiting new graduates.

For further information about what the Employability Service offers at Exeter visit [www.exeter.ac.uk/undergraduate/employability](http://www.exeter.ac.uk/undergraduate/employability)

### Examples of the destinations of our recent graduates:

#### Occupations:

Web Developer // Police Officer // Account Manager // Trainee Site Assistant // Assistant Archaeologist // Trainee Gallery Curator // Press Executive // Field Archaeologist

#### Employers

Thames Valley Police // Pangaea Media // Archaeological Investigations Ltd // Herbert Museum and Art Gallery // Birmingham Archaeology // Barbican House Museum

### Examples of further study followed by our graduates:

- MA Managing Archaeological Sites, University College London
- MA Landscape Archaeology, University of Exeter
- MA Environmental Archaeology, University of Sheffield
- PhD Archaeology, University of Exeter
- MA Experimental Archaeology, University of Exeter

## Entry requirements and applying

You can find a summary of our typical entry requirements on the inside front cover of this brochure.

The full and most up-to-date information about Archaeology is on the undergraduate website at [www.exeter.ac.uk/undergraduate/degrees/archaeology](http://www.exeter.ac.uk/undergraduate/degrees/archaeology) and we strongly advise that you check this before attending an open day or making your application. Some programmes require prior study of specific subjects and may also have minimum grade requirements at GCSE or equivalent, particularly in English Language and/or Mathematics.

We make every effort to ensure that the entry requirements are as up-to-date as possible in our printed literature. However, since this is printed well in advance of the start of the admissions cycle, in some cases our entry requirements and offers will change.

If you are an international student you should consult our general and subject-specific entry requirements information for A levels and the International Baccalaureate, but the University also recognises a wide range of international qualifications. You can find further information about

academic and English language entry requirements at [www.exeter.ac.uk/undergraduate/international](http://www.exeter.ac.uk/undergraduate/international)

For information on the application, decision, offer and confirmation process, please visit [www.exeter.ac.uk/undergraduate/applications](http://www.exeter.ac.uk/undergraduate/applications)





# Module details

**KEY** C = Core  
O = Optional

For up-to-date details of all our programmes and modules, please check [www.exeter.ac.uk/archaeology](http://www.exeter.ac.uk/archaeology)

## Year 1 Modules

Module Name	Archaeology	Archaeology with Forensic Science	Ancient History and Archaeology	Archaeology and Anthropology
Analysing Archaeological Evidence	C	C	C	C
Archaeological and Forensic Science Practicals	O	C		
Archaeology at Work	O	C		
Artefacts 1	C	O		
Artefacts 2	C	C		
Discovering Historic Archaeology	C	C	C	C
Discovering Our Past	C	C	C	C
Interpreting Sites and Landscapes	C	C	C	C
History of Archaeology	C	C	C	C

## Year 2 Modules

Module Name	Archaeology	Archaeology with Forensic Science	Ancient History and Archaeology	Archaeology and Anthropology
Archaeological Field Work Report or Fieldschool	C	C	C	C
Forensic Anthropology	O	C	O	O
Forensic Science		C		

## Year 3 Modules

Module Name	Archaeology	Archaeology with Forensic Science	Ancient History and Archaeology	Archaeology and Anthropology
Dissertation	C	C	C	C
Funerary Osteoarchaeology	O	C	O	O

## Examples of Year 2 and Year 3 Options

- Professional Placement
- Advanced Field Work Project
- Introduction to Egyptian Archaeology
- Medieval Castles in Context
- Settlement and Community in the Western Roman Empire
- Archaeology and Social Anthropology
- Zooarchaeology
- Maritime Archaeology
- Aerial Survey
- Forensic Anthropology
- Reading Stone Tools
- Connectivity: the Archaeology of South Asia and the Indian Ocean
- The Emergence of Agriculture
- Understanding the Landscape of Roman Britain
- Egyptology
- Funerary Osteoarchaeology
- Archaeology and Heritage Management
- Palaeobotany
- Britain and Ireland in the Age of Stonehenge
- Bronze Age Britain in its European Context
- Food and Food Material Culture
- Farming Economies: Archaeology and Ethnography
- Hunter-Gatherers: Archaeology and Ethnography
- Material Culture in Prehistory
- Material Culture Presentation and Interpretation
- Neolithic Britain in its European Context
- North American Prehistory
- Romanisation: Interaction, Conquest and Change in Late Iron Age and Roman Dacia
- South American Prehistory: An Introduction
- Understanding the Buildings of Medieval Britain
- The Vikings in Francia and England
- The Vikings in Scotland and the Irish Sea Provinces



# Archaeology modules

Please note that availability of all modules is subject to timetabling constraints and that not all modules are available every year. For a full list and details of the individual modules, please check the undergraduate section of our website at [www.exeter.ac.uk/archaeology](http://www.exeter.ac.uk/archaeology)

## Year 1

<b>Analysing Archaeological Evidence</b>	Outlines the principles and methods of archaeological analyses, including aspects of dating, environmental and materials analyses, as well as theoretical perspectives and aspects of professional practice.
<b>Archaeological and Forensic Science Practicals</b>	Provides an introduction to a selection of key scientific skills that are useful to both archaeological and forensic sciences.
<b>Archaeology at Work</b>	Develops skills in the application of key archaeological principles, and use these skills in a case-study that will be set within current professional archaeological practice.
<b>Artefacts</b>	Hands-on experience to develop skills in recognising artefacts and materials, and an understanding of how archaeologists deal with artefacts.
<b>Discovering Historic Archaeology</b>	You'll learn about the rise and fall of classical civilizations and explore the archaeology of medieval societies in Europe, including settlements, burials and religion, and the origins of the modern world.
<b>Discovering Our Past</b>	Outlines how Western European perceptions of the past developed into modern archaeology, providing an exploration of important themes in intellectual and academic history.
<b>History of Archaeology</b>	An introduction to the discipline's history and development, examining such themes as the evolution of field work and other practical procedures, as well as the evolution of approaches to the interpretation of archaeological evidence.
<b>Interpreting Sites and Landscapes</b>	Looks at how archaeologists locate, investigate and interpret archaeologically significant sites and landscapes through survey, remote sensing and excavation techniques.

## Year 2 (see also optional modules below)

<b>Archaeological Field Work Project or Field School</b>	This is a four-week excavation, field work or related practical project, usually completed during the first summer vacation. During the first term of the second year you'll research and write up your Field Work Project.
<b>Forensic Anthropology</b>	Provides an introduction to the basic principles of the study of human remains to establish personal identity with emphasis on the characterisation of skeletal shape and size, and application of demographic reference standards for age and sex determination and population affinity. It also introduces pathological and anatomical variation applied to establishing human identity and the place of such studies within the discipline of biological anthropology.
<b>Forensic Science</b>	Covers aspects of forensic sciences such as ballistics, DNA fingerprinting and drugs analysis and includes sessions by visiting experts involved in the criminal justice system.
<b>Year 3 (see also optional modules below)</b>	
<b>Dissertation</b>	This is the culmination of your degree, where you will be able to make use of all the things you have learnt by investigating a theme of your own choice. Guidance is provided throughout by one of the staff who has suitable knowledge of your area of study.
<b>Funerary Osteoarchaeology</b>	You will study the complexity and variability of funerary treatment and rituals based upon a chronological development in Europe and the Near East from the Middle Palaeolithic to the Medieval period. You will also examine the relationship between the funerary domain and the once living society that created it.

## Examples of Year 2 and 3

<b>Aerial Survey</b>	You will be introduced to the principles, methods and applications of aerial photographic data in archaeological research. You will develop basic practical competence in air-photo interpretation and mapping, along with a general appreciation of their specific role in reconstructing and understanding past landscapes.
----------------------	---



**Professional Placement**

Gives you the opportunity to gain practical experience of archaeology outside the University. We have strong links with many organisations in the South West and further afield. In the past placements have been taken at the National Trust; English Heritage; W.S. Atkins Consulting; Devon County Council; the Dartmoor and Exmoor National Parks archaeological services; the Exeter and Cornwall Archaeological Units; and at local museums.

**Advanced Field Work Project**

Provides advanced practical experience of field archaeology work to students who have already gained basic competence of field techniques. You'll develop more advanced skills and have an opportunity to make more of an individual contribution to an expedition, demonstrating that you're capable of working competently with a lower level of supervision.

**Archaeology and Social Anthropology**

While both archaeology and anthropology have aimed to understand the 'exotic' contexts of other cultures, whether contemporary or ancient ones, both disciplines have also challenged this notion, by scrutinising our own cultural understandings and practices. This module explores central themes in current socio-cultural anthropology and the influence these developments have had on archaeological research.

**The Archaeology of the Indian Subcontinent**

Explores the archaeology of the Indian subcontinent from the emergence of the Indus civilisation to the medieval empire of the South Indian Cholas, tracking the rise of proto-historic urbanisation in the Gangetic plain and across the subcontinent and into Sri Lanka. A major theme is external contacts and Indian Ocean trade through the first millennium AD.

**Egyptology**

Provides both practical advice on researching and studying Egyptology, and the theoretical issues that are involved. These methods and techniques are then applied to one specific site in order to demonstrate the range of ancient materials available and to encourage critical reflection on the differing ways in which Egyptologists use that material.

**Hunter-Gatherers: Archaeology and Ethnography**

Develops an understanding of the wide variety of ways of life that hunter-gatherer peoples have today and had in both the distant and more recent past. You'll look at how archaeologists can use information about recent or contemporary hunter-gatherer groups to inform our interpretations of the archaeological record.

**Introduction to Egyptian Archaeology**

Provides a broad overview of Egyptian history, geography, and material remains. The module will develop your understanding of the major monuments of each distinctive cultural phase and the wide range of archaeological material encountered in Egyptian sites. A sound understanding of the key problems and controversial areas of interpretation will be stressed.

**Medieval Castles in Context**

Develops an appreciation of medieval castles and related sites in Britain between the eleventh and sixteenth centuries. Taking an holistic approach to these sites within their broader social and landscape contexts, you will gain an overview of key differences in castle design both temporally and spatially, as well as an appreciation of different debates concerning their interpretations, functions and meanings.

**Palaeobotany**

Examines the theory and practice of archaeobotany, giving basic practical competence in the techniques and a practical appreciation of observation, recording and interpretation issues. You will attain basic competence in the identification and recording of plant remains.

**Reading Stone Tools**

You will learn the theory and practice of lithic analysis within archaeology, gaining basic practical competence in the technique and a practical appreciation of observation, recording and interpretation issues. The module will be a mixture of theories and practice, centred on gaining the skill of interpreting stone tools.

**Settlement and Community in the Western Roman Empire**

Introduces concepts of space and identity and discusses the status and function of settlements, drawing upon examples mainly from the western part of the Early Roman Empire. You will develop an appreciation of the role of the settlements in the landscape, aspects of social hierarchy revealed by the settlement pattern, and the social use of space for public or private activities.

**Understanding the Buildings of Medieval Britain**

Develops an appreciation of the secular buildings of Britain between the eleventh and sixteenth centuries, and the principles and methodologies underpinning their study using archaeological and architectural data.

**Zooarchaeology**

You will study the theory and practice of zooarchaeology, the study of animal remains from archaeological sites, learning basic practical competence in the technique and a practical appreciation of observation, recording and interpretation issues.



## Academic excellence

- We are in the top one per cent of universities in the world, and a regular fixture in top 10 league tables of UK universities
- You will receive an outstanding education here; our teaching was voted fourth in the country in the latest National Student Survey
- Our teaching is inspired by our research, nearly 90 per cent of which was ranked as internationally recognised by the 2008 Research Assessment Exercise
- We attract the best qualified students in the country; we're in the top 10 for the number of students graduating with a first or 2:1 and for entry standards (students achieving AAB at A level and above)

## A vibrant community

- Our students are the most engaged in the country, smashing participation records in student elections for the last two years running
- The Students' Guild offers an unrivalled selection of societies, from sport to culture to community volunteering groups – 8,000 students take part in 165 societies
- We are a top 10 UK university for sport and provide excellent facilities and support whether you want to compete at the highest level or just for fun

- We work with our students to continually improve the education on offer, via initiatives which put students at the heart of our decision making process
- We're a truly international community, with students from over 130 countries and staff of 50 different nationalities
- Our students are consistently among the most satisfied in the country, ranking us in the top 10 of the National Student Survey each year since it began

## Ambition for the future

- We equip you with the skills employers need via business placements, study abroad schemes, volunteering opportunities, careers advice from successful alumni and much more
- Despite tough economic times, we've improved our employment record year-on-year: more than 90 per cent of students get a job or further study place within six months of graduating
- We've invested over £350 million in our three campuses, from new accommodation and research labs to state-of-the-art lecture theatres and library spaces

## Explore the possibilities

### Open Days

Come and visit our beautiful campuses. We hold Open Days twice a year in June and September.

### Campus Tours

We run Campus Tours at the Streatham Campus every weekday at 2pm during term time. You'll be shown round by a current student, who'll give you a firsthand account of what it's like to live and study at Exeter.

For full details and to book your place, contact us on:

**Website:** [www.exeter.ac.uk/opendays](http://www.exeter.ac.uk/opendays)

**Phone:** +44 (0)1392 724043

**Email:** [visitus@exeter.ac.uk](mailto:visitus@exeter.ac.uk)

### Offer-Holder Visit Days

Once you receive confirmation of an offer we'll contact you with an invitation to visit us on an Offer-Holder Visit Day, which will give you the chance to find out more about your programme and department and decide whether to accept our offer. While this opportunity to visit includes a campus tour and formal introduction to the department, much emphasis is placed on a more informal period for questions and answers. A number of our current students also take part on these days, leading tours and giving you the opportunity to ask them what studying at Exeter is really like! Offer-Holder Visit Days take place during the period January to April.

UNIVERSITY OF  
**EXETER**

[www.exeter.ac.uk/archaeology](http://www.exeter.ac.uk/archaeology)

This document forms part of the University's Undergraduate Prospectus. Every effort has been made to ensure that the information contained in the Prospectus is correct at the time of going to print. The University will endeavour to deliver programmes and other services in accordance with the descriptions provided on the website and in this prospectus. The University reserves the right to make variations to programme content, entry requirements and methods of delivery and to discontinue, merge or combine programmes, both before and after a student's admission to the University. Full terms and conditions can be found at [www.exeter.ac.uk/undergraduate/applications/disclaimer](http://www.exeter.ac.uk/undergraduate/applications/disclaimer)



Find us on Facebook and Twitter:  
[www.facebook.com/exeteruni](http://www.facebook.com/exeteruni)  
[www.twitter.com/uniofexeter](http://www.twitter.com/uniofexeter)

100% recycled

2012CAMS034