

## Add Xerox queue to Ubuntu 1904

The following assumes a connection to the UoE network is in place along with a basic understanding of using Command Line and your Ubuntu system settings.

### Pre-requisites:

You will need smbclient & python3-smbc

In a terminal:

```
:-$sudo apt-get install smbclient
```

```
:-$sudo apt-get install python3-smbc
```

It will also be desirable to have a copy of the xrxC8035.ppd file to provide more control over your print settings, which can be downloaded from [C.forrest@exeter.ac.uk](mailto:C.forrest@exeter.ac.uk) or [D.Howells@exeter.ac.uk](mailto:D.Howells@exeter.ac.uk), although you can probably get away with using the generic Postscript driver.

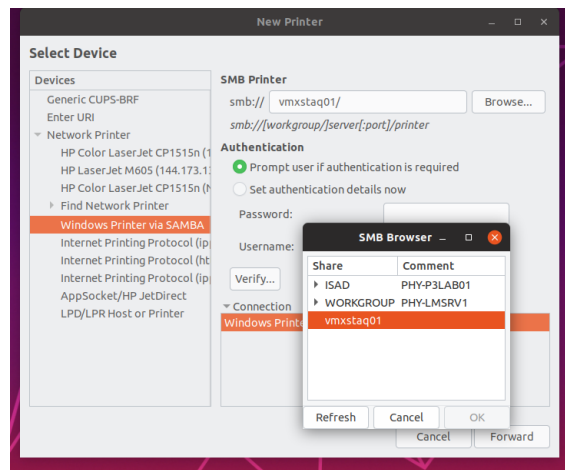
### Adding the Printer Queue

Click 'Activities' and in search bar type 'printers' and select printers from the settings section.

Click 'Additional Printer Settings' and then '+Add printer'

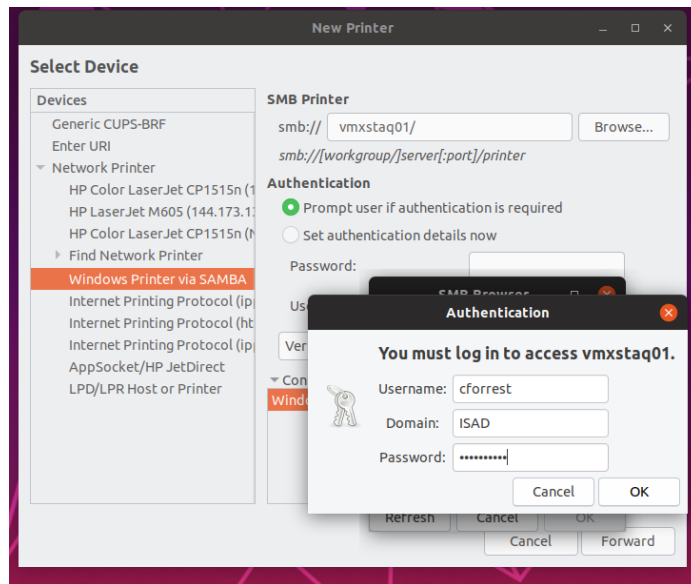
In the 'New Printer' dialogue window select> Network Printer>Windows Printer via SAMBA

In the smb:// field type vmxstaq01/ then click browse



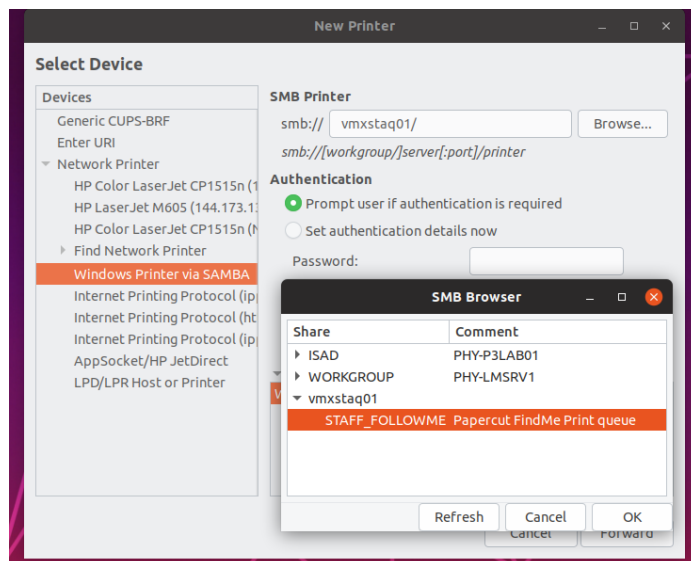
In the smb browse window click on vmxstaq01

In the authentication window enter your UoE username and password and change Domain from Workgroup to ISAD.



Click OK.

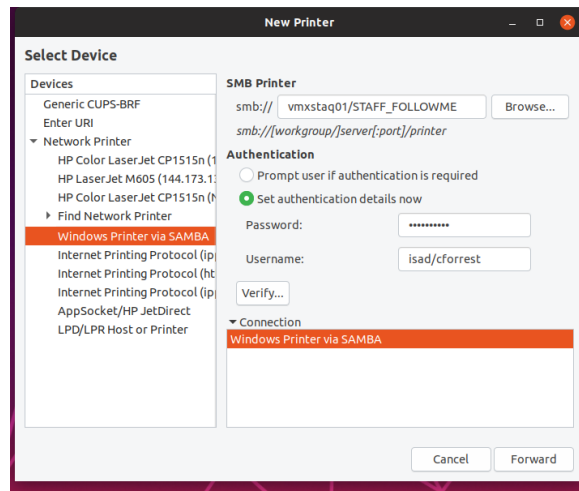
You should now see the STAFF\_FOLLOWME Papercut FindMe queue in the SMB Browser.



Highlight the queue and click OK

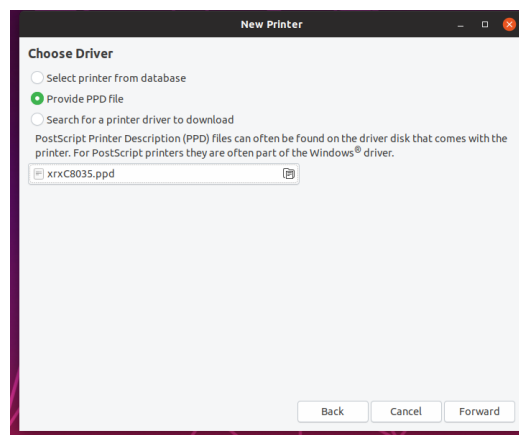
The smb:// path should now be completed in the New Printer Dialogue window

Under authentication click the 'Set authentication details now' radio button and enter your username and password details. **Note:** username needs to be entered in syntax of isad/username. No need to click on verify as it will give a false negative.



Click Forward

The following Window will allow selection of Driver or PPD file. If you have the PPD file then select that option and then proceed to browse for it and select it. If you don't have the PPD file choose to select printer from database and then select the first Generic Postscript option.



Click Forward

The final dialogue window will allow you to enter 'friendly' names for your printer and then an option to print a test page. Once complete you should see Printer Properties displayed as below

