

UNIVERSITY OF  
**EXETER**

# SOCIOLOGY

UNDERGRADUATE SUBJECT BROCHURE 2016



# KEY INFORMATION AND ENTRY REQUIREMENTS

	UCAS CODE	TYPICAL OFFER
<b>BA Single Honours</b> Sociology/with Study Abroad	L300/L302	AAB-ABB; IB: 34-32
<b>BSc Single Honours</b> Sociology/with Study Abroad	L303/L304	AAB-ABB; IB: 34-32
Criminology	M900	AAA-ABB; IB: 36-32
<b>Combined Honours</b> Philosophy and Sociology/with Study Abroad	VL53/VL5H	AAB-ABB; IB: 34-32
Politics and Sociology/with Study Abroad	LLH2/LL23	AAA-ABB; IB: 36-32
Sociology and Anthropology/with Study Abroad	L3L6/L3L7	AAB-ABB; IB: 34-32
Sociology and Criminology/with Study Abroad	LM39/LMH9	AAB-ABB; IB: 34-32
Sociology and Modern Languages (Chinese, French, German, Italian, Portuguese, Russian, or Spanish)	LR03	AAA-ABB; IB: 36-32
Flexible Combined Honours/with Study or Work Abroad	Y004/Y006	A*AA-AAB; IB: 38-34
Flexible Combined Honours with UK Work Experience	Y007	A*AA-AAB; IB: 38-34

We make every effort to ensure that entry requirements are up-to-date in our printed literature. However, because brochures are produced well in advance, our entry requirements and offers may be subject to change.

For up-to-date details regarding entry requirements and programme specifics, please see our Sociology pages at [www.exeter.ac.uk/ug/sociology](http://www.exeter.ac.uk/ug/sociology)

We strongly advise that you check this before attending an Open Day or making your application. Some programmes require prior study of specific subjects and may also have minimum grade requirements at GCSE or equivalent, particularly in English Language and/or Mathematics.

## Applying to study Combined Honours with Modern Languages

When applying to Sociology Combined Honours degrees with Modern Languages you will need to indicate under 'further details' in the 'choices' section of the application the language you wish to study using the codes in the entry data table. Please note you may choose only one language. For further information on completing your UCAS form, please visit [www.ucas.com](http://www.ucas.com)

MODERN LANGUAGES ENTRY DATA		
CODE	SUBJECT	REQUIRED SUBJECTS
<i>Fren</i>	French	GCE AL French grade B; IB French HL5
<i>Chin</i>	Chinese	GCE AL in a modern foreign language
<i>Germ</i>	German	(French, German, Italian, Portuguese, Russian or Spanish)
<i>Ital</i>	Italian	grade B; IB modern foreign language
<i>Port</i>	Portuguese	(French, German, Italian, Portuguese, Russian or Spanish) HL5
<i>Russ</i>	Russian	
<i>Span</i>	Spanish	

### Language Requirements for Combined Honours with Modern Languages

- Grade B at A level is required in any language you intend to study from A level
- You may only choose one language.
- Students wishing to pursue language study on the basis of a GCSE are normally classed as beginners
- German, Italian, Russian, and Spanish can be studied either from A level or beginner's level, with both cohorts reaching degree level in the final year. Chinese and Portuguese can normally only be studied from beginner's level

with students attaining degree level in the final year. French can only be studied from A level, not beginner's level, to degree level, though it is possible to study French from beginner's level to a lesser level of proficiency than degree level in the Foreign Language Centre, subject to demand.

### International students

The University recognises a wide range of international qualifications as well as A levels and the International Baccalaureate. You can find further information about academic and English language entry requirements at [www.exeter.ac.uk/ug/international](http://www.exeter.ac.uk/ug/international)

For information on the application, decision, offer and confirmation process, please visit [www.exeter.ac.uk/ug/applications](http://www.exeter.ac.uk/ug/applications)

### STREATHAM CAMPUS, EXETER

Website: [www.exeter.ac.uk/ug/sociology](http://www.exeter.ac.uk/ug/sociology)

Email: [ssis-admissions@exeter.ac.uk](mailto:ssis-admissions@exeter.ac.uk)

Phone: +44 (0)1392 723192

# SOCIOLOGY

9th in the UK for world-leading and internationally excellent research<sup>1</sup>

97% satisfied with teaching quality and 5th for Sociology for overall satisfaction in the National Student Survey 2014<sup>2</sup>

Work experience bursaries of up to £2,000 for BSc students taking applied research training<sup>3</sup>

Flexibility to tailor your degree around your own interests

Opportunities to study abroad in Europe, the USA, Australia and elsewhere

Distinctive interdisciplinary approach with philosophers, sociologists and anthropologists working together in teaching and research

Sociology is a fascinating subject providing a critical understanding of all aspects of society and social life. By studying sociology you will develop an understanding of the contemporary world, human behaviour and the forces shaping society. You will examine social, political, historical, cultural and economic issues and study topics as diverse as class and social inequality, health and disability, globalisation, crime, countercultures, family life, gender and the development of cities. Sociology is particularly concerned with social transformation and explores how societies are formed, develop and may change in the future.

At Exeter we have a distinctive focus on cultural sociology and offer modules on topics such as the sociology of music, sport, warfare, religion, science and technology, health, crime and the media. We also have significant expertise in anthropology with groundbreaking new modules covering issues such as addiction, the use of natural resources and human/animal interactions.

Your degree will provide you with the insight into contemporary society, as well as practical and transferable skills sought after by major employers and relevant to a wide range of careers in the private, public and third sectors including business, journalism, marketing, social research, teaching, retailing, human resources, overseas development, government and the Civil Service.

Sociology is taught and studied in the department of Sociology, Philosophy and Anthropology. Each aims to answer fundamental questions about our past, present and future. The close relationship between these three subjects is indicative of the interdisciplinary focus in which Sociology can be studied either as Single Honours, or in combination with several other arts and social science subjects, including Philosophy and Anthropology. The department is small, ambitious and highly successful, and you will benefit from a friendly atmosphere and exposure to the latest inspirational advances in social science research.

Our academic staff have a wide range of research interests in sociology, anthropology and philosophy. Our research was ranked 9th in the UK for world-leading and internationally excellent research in the Research Excellence Framework 2014 and is particularly noted for the contributions it makes to the sociology and anthropology of culture (science and technology, religion, the arts, sport and the military) and the sociology of knowledge and social theory. As an undergraduate you will benefit from this research culture as your lecturers will be contributing to current debates, giving you access to the latest thinking and resources.

Our undergraduates have established a popular Sociology Society which meets several times a year and organises a seminar series with members of staff to provide an arena outside the formal teaching structure in which staff and students can discuss sociological issues.

<sup>1</sup> Research Excellence Framework 2014 based on the percentage of research categorised as 4\* and 3\*

<sup>2</sup> based on the average percentage of positive responses for teaching quality and across all survey categories for full service universities

<sup>3</sup> value of bursary depends on length of placement

# DEGREE PROGRAMMES

Our undergraduate degree programmes provide an overview of very different types of societies and enable you to study aspects of these societies in depth. We will help you become an independent learner and develop sociologically informed judgements. Our programmes are demanding and encourage initiative and open-mindedness, ensuring that you will be well equipped with a range of academic, personal and professional skills. You will develop the ability to undertake independent research and work to deadlines; digest, select and organise material for written work and oral presentations; critically reflect on and evaluate your own and others' work; understand, assimilate and evaluate complex arguments and ideas; work with others as part of a team; and to think and write clearly about broad themes.

In your core modules you'll learn to use logical and systematic methods of analysis to reveal patterns of social action. These will include qualitative research methods such as conducting interviews, focus groups and visual analysis; learning how to design your own research projects; and obtaining an overview of the use and interpretation of quantitative data.

Each year, depending on your degree programme, you may elect to take options outside of sociology, for example: to develop skills attractive to employers such as language proficiency; to examine an issue you've covered in one of your sociology modules from a different disciplinary perspective; or to widen your horizons and challenge yourself intellectually.

Sociology can be studied in combination with other subjects in a range of Combined Honours degree programmes or as a Single Honours degree.

## How your degree is structured

Degrees are divided into core and optional modules, giving you the flexibility to structure your degree according to your specific interests. Individual modules are worth 15 or 30 credits each and full-time undergraduates need to take 120 credits in each year. Within Sociology, in addition to the core modules, you can choose from an extensive range of options in all three years, a few examples of which are shown later in this brochure.

For up-to-date details of all our programmes and modules, please check [www.exeter.ac.uk/ug/sociology](http://www.exeter.ac.uk/ug/sociology)

## Single Honours

Our flexible Single Honours programme gives you the opportunity to study for a BA or BSc depending on your particular interests. Our BSc pathway is particularly suitable if you are interested in developing a career in the public sector, policy development, or any research-based career such as journalism that relies on detailed proficiency in research and analysis skills. Our highly popular BA programme has a strong focus on cultural sociology, and will equip you with a range of transferable skills and knowledge suitable for a broad spectrum of careers.

## BA Sociology

This degree is designed to introduce you to the sociological ways of investigating the world in which we live. Core modules cover the history and development of sociological theory and the skills and techniques employed in sociological research. You will also develop a critical understanding of the rise and transformation of modern societies, with a particular focus on the last three decades, considering issues such as globalisation, migration and class.

**Year 1** The first year provides the foundational knowledge and theoretical framework for your degree. You will learn how sociologists study human society and the challenges they face by examining the work of sociologists on topics as diverse as street corner culture in Chicago, Stonehenge, and mental illness in Ireland. You will also develop skills in formulating and debating an argument, for example through project work examining the social significance of material objects.

**Year 2** You will be required to take compulsory modules in theory and method which build upon the first year and are intended to equip you with the expertise to take specialist options during your degree. You'll be able to choose from a wide range of Sociology options covering topics as diverse as counter cultures, music, city life, health, media, warfare and cyborg studies.

**Year 3** The centre-point of the final year is the compulsory dissertation. This provides you with the opportunity to explore an area of interest and to demonstrate what you have learnt over the previous three years. In addition, you will take up to three other specialist modules to create a programme of work which reflects your interests.



**A step-change in quantitative social science skills**

Funded by the Nuffield Foundation, ESRC and HEFCE

## BSc Sociology

This programme is specially designed to help you develop an understanding of how societies, institutions and practices came into being, how they work and might change in the future. This highly relevant degree is particularly concerned with social transformation and in developing an insight into the major challenges facing contemporary society. You will learn a variety of techniques used in sociological research including observation, field work and focus groups. Offered under the prestigious Q-Step programme, this degree also includes elements of quantitative data analysis, helping you to develop skills that are highly sought after by employers.

**Year 1** Your first year will give you an excellent grounding in the theories and application of sociology with a particular focus on the issues facing the contemporary world such as social inequality, crime, deviance, migration, and globalisation.

**Year 2** In your second year, you will develop the skills used by sociologists to understand how societies operate. In addition to gaining hands-on experience of designing your own research project and collating primary evidence, you will practise the techniques used in ethnography and explore case studies on topics as varied as social media and the British independent music scene. You will also be able to choose from a wide range of options covering issues such as childhood, addiction, gender, consumerism, the Holocaust, warfare, and immigration.

**Year 3** The centre-point of the final year is the compulsory dissertation which may draw on empirical data or your own original field work. This provides you with the

opportunity to explore an area of interest and to demonstrate what you have learned over the previous three years. In addition, you'll take up to three other specialist modules to create a programme of work which reflects your interests.

## BSc Criminology

Criminology aims to provide systematic understanding of the historical patterning of crime, the causes of criminal behaviour and its consequences, as well as policy response. The interdisciplinary make-up of the BSc in Criminology at Exeter is rooted in sociological approaches, but also offers the potential to combine these perspectives on crime and deviance with those from historical, political, and psychological studies.

Offered under the prestigious Q<sub>2</sub>-step programme, this degree will train you in applied research and data analysis skills which will help you investigate the nature of crime, for example by analysing crime survey data or the types of information used to inform intelligence-led policing and offender profiling. You will benefit from the opportunity of a work placement supported by a bursary of up to £2,000 and have access to specialist training resources.

The aim is to provide you with a full range of social science research skills that will enable you to engage with the nature and complexity of social life, deviance and crime, graduating with specific technical skills sought by employers.

## Combined Honours degrees

### BA Philosophy and Sociology

Studying Philosophy and Sociology brings to life the range of intellectual thought and social diversity associated with important contemporary issues. The two disciplines complement each other in the understanding of human life. You will take the core modules in sociology and philosophy in order to gain the foundations of these two disciplines. This programme will enable you to learn and apply analytical-philosophical skills to the study of a variety of older and newer sociological questions, as well as many contemporary social processes.

Full details of Philosophy modules can be found at [www.exeter.ac.uk/ug/philosophy](http://www.exeter.ac.uk/ug/philosophy)

### BA Politics and Sociology

Students on this programme take the core modules in politics and sociology in order to gain the foundations of these two disciplines. Opportunities for studying optional modules are also available and you will be free to take any module on either side of the programme which interests you. In the final year, you will take a dissertation in either sociology or politics, depending on your own area of interest.

Full details of Politics modules can be found at [www.exeter.ac.uk/ug/politics](http://www.exeter.ac.uk/ug/politics)

### BA Sociology and Anthropology

By studying anthropology alongside sociology, you can fully explore how relevant the discipline is for the study of our globalised world. Anthropology's comparative outlook and concern with cultural difference complements sociologists' interests in the formation of social groups and the role of shared understanding in coordinating the actions of their members. Anthropology traditionally focused on the study of small-scale and pre-industrial societies, but increasingly it has applied its distinctive insights to the problems of modern living. Anthropologists today are as interested in the practices of multinational companies and the impact of natural resource exploitation on local communities as in the rituals and ceremonies of native Amazonians.

Studying anthropology with sociology will equip you with a full range of critical analytical perspectives as well as research methods to start your own exploration of the nature and complexity of human social life. You will study core modules from both disciplines, and be able to choose from an excitingly diverse array of optional modules in your second and final years as well as undertaking a dissertation focused on either discipline.

Full details about Anthropology can be found at [www.exeter.ac.uk/ug/anthropology](http://www.exeter.ac.uk/ug/anthropology)

### BSc Sociology and Criminology

By studying Sociology and Criminology, you will investigate the causes of criminal behaviour as well as its consequences for victims and for society as a whole. You will pay particular attention to the role of criminal justice organisations in defining and responding to crime as a social problem. The interdisciplinary nature of the programme will give you sociological, historical, political and psychological perspectives for understanding and responding to crime and deviance. You will explore theoretical, empirical and methodological issues associated with sociology and other fields of social research and develop skills in critical analysis. Optional modules will cover issues as diverse as forensic science, war crimes, ethics, addiction, and human rights.

Full details of this programme can be found at [www.exeter.ac.uk/ug/sociology](http://www.exeter.ac.uk/ug/sociology)

### BA Sociology and Modern Languages (Chinese, French, German, Italian, Portuguese, Russian, and Spanish)

These four-year programmes give you a wonderful opportunity to combine the challenge of exploring sociology with a modern language. Your third year will normally be spent studying abroad, developing your language skills. German, Italian, Russian, Spanish, Chinese and Portuguese can be studied as a beginner, in which case you spend more time studying language in the first year. French can only be studied from A level, not beginner's level. For further details, see the entry requirements page.

Full details of the modern languages modules can be found at [www.exeter.ac.uk/ug/languages](http://www.exeter.ac.uk/ug/languages)

### Flexible Combined Honours

Our innovative Combined Honours scheme enables you to combine modules from a number of different fields of study not otherwise available through an existing Combined Honours programme. You can combine Sociology with up to two other subjects from an extensive list of subjects. Throughout your degree you will be given regular support to help you choose the most appropriate pathway for you. Further information and the full list of available subjects can be found at [www.exeter.ac.uk/ug/flexible](http://www.exeter.ac.uk/ug/flexible)

# LEARNING AND TEACHING

We convey sociology as a dynamic and self-questioning mode of social scientific inquiry, in order to impart knowledge and understanding of the nature, development and structure of contemporary societies, and give an in-depth focus on the core features of those societies. We encourage independent study and assist the development of sociologically informed critical judgement.

The nature of university learning, especially in the arts and social sciences, involves a lot of self-directed study and research. As well as traditional lectures, seminars, and tutorials, led by internationally respected academics at the forefront of research, you'll be encouraged to use your initiative by organising study groups, taking advantage of online and traditional learning resources, and managing your own workload and time.

## Contact hours

You should expect around 10 contact hours per week in your first year and will need to plan additional hours of private study per module. Your total workload should average about 40 hours per week during term time.

You will have regular tutorials where you will meet to discuss oral and written assignments with your tutor, together with a small group of other students. These personal contacts are very important in developing staff-student relations and for getting to know your fellow students. Our programmes help to develop skills and understanding so that you can take increasing responsibility for your learning in more specialised seminar-based modules.

You'll be expected to develop good organisational and time management skills and we will help you acquire further employability skills (such as proficiencies in communication, research, presentation and IT). The modules within our degree programmes are designed to train you to gather, select and organise material from a variety of sources and evaluate its significance. We stress the importance of working flexibly and creatively with others, engaging in rational debate, and exercising independent thought and judgement.

## Innovative teaching

We constantly introduce new methods of learning and teaching, including the use of interactive approaches through our virtual learning environment, where you can access detailed information about modules and learning outcomes, and interact via discussion forums.

The Student-Staff Liaison Committee gives you the chance to discuss and review the degree programmes, including existing and planned module content, through regular meetings with departmental staff.

## Research-inspired teaching

You will have the opportunity to work closely with academic staff who are at the cutting-edge of research and academic debate and you will benefit from an innovative curriculum inspired by leading research. All staff teach third year options which are linked to their own interests which include the study of culture, social media, consumption, music, science and technology, sport and the armed forces.

## Academic support

All students have a personal tutor who is available for advice and support throughout your studies. There are also a number of services on campus where you can get advice and information, including the Students' Guild Advice Unit. You can find more information about all the services in the University's undergraduate prospectus or online at [www.exeter.ac.uk/undergraduate](http://www.exeter.ac.uk/undergraduate)

## Study abroad

Studying for your degree at Exeter gives you the exciting possibility of spending up to one year abroad. Last year, almost 500 Exeter students studied at one of our partner universities, which are in more than 40 countries around the world. You could learn a new language and experience different cultures, become more self-confident and widen your circle of friends. You could get the chance to specialise in areas that are not available at Exeter, and when it comes to a

career, your skills and knowledge of another country will prove invaluable to many employers. This of course applies equally to overseas students coming to study abroad at Exeter.

If you take Sociology with a modern language, you will normally spend your third year abroad. Please check the Modern Languages website for further details at [www.exeter.ac.uk/ug/languages](http://www.exeter.ac.uk/ug/languages)

For our other degree programmes, you may study for half a year at a partner institution in Europe, North America or Australia or follow a four-year 'with Study Abroad' programme. You may apply directly for the four-year programmes or transfer from another programme once you are at Exeter. Full details of these schemes and of our partner institutions can be found on our website at [www.exeter.ac.uk/socialsciences/undergraduate/studyabroad](http://www.exeter.ac.uk/socialsciences/undergraduate/studyabroad)

For further details about study abroad please check the International Office website at [www.exeter.ac.uk/international/study/erasmus](http://www.exeter.ac.uk/international/study/erasmus)

## Assessment

We use diverse methods of assessment to support our emphasis on presentation, teamwork and projects/dissertations, as well as essay writing and exams. The ratio of assessment by coursework to assessment by exam varies according to which modules you take, but on average is about 50:50.

Your first year does not count towards your final degree classification, but you do have to pass it in order to progress. If you study a three-year programme, assessments in the final two years both count towards your classification, and if you study a four-year programme, then the final three years all contribute.

For full details of the assessment criteria for each module, check the undergraduate section of our website at [www.exeter.ac.uk/ug/sociology](http://www.exeter.ac.uk/ug/sociology)

# CAREERS

Your degree will provide you with the insight into contemporary society, as well as practical and transferable skills sought after by major employers and relevant to a wide range of careers in the private, public and third sectors including business, journalism, marketing, social research, teaching, retailing, human resources, overseas development, government and the Civil Service.

You will receive an excellent all-round education, where you will learn to understand other people's points of view, to communicate your own position clearly and to argue effectively. You will develop a range of practical skills relating to the collation, analysis and presentation of information, which form the basis of many careers and build personal skills such as working effectively, independently and within a team.

Our programmes are demanding and encourage initiative and open-mindedness, helping to ensure that you will be well equipped with a range of academic,

personal and professional skills, all of which will prepare you for future employment or research in a wide variety of fields. Many of our graduates choose to follow their degree with employment or further study in people-focused fields, whereas others choose to use their skills in business or public sector administration.

Our careers service offer a variety of schemes which encourage you to participate in employability-related workshops, skills events, volunteering and employment which will contribute to your career decision making skills and success in the employment market.

Exeter has an excellent reputation with graduate recruiters and our students and graduates compete very successfully in the employment market. Many employers target the University when recruiting new graduates.

For further information about what the careers service at Exeter offers, please visit [www.exeter.ac.uk/ug/careers](http://www.exeter.ac.uk/ug/careers)

## Examples of the destinations of our recent graduates:

### Occupations


Student Support Worker // Sales Manager // Marketing Assistant // Graduate Library Trainee // Audit Assistant // Legal Service Manager // Secondary School Teacher

### Employers

National Centre for Young People with Epilepsy // Scholastic // NHS // National Skills Academy // KPMG

## Examples of further study followed by our graduates:

- MA Gender Studies, University College London
- MA Philosophy and Sociology of Science, University of Exeter
- MA International Relations, University of Exeter
- Graduate Diploma in Law, College of Law, Guildford
- MA Marketing, Business School, University of Exeter

 My passion for studying society began at the age of 15, when I visited the British Museum for the first time. I was fascinated by all the exhibits that showcased the lifestyles of different cultures, and was inspired to find out more about what society is. The Sociology programme at Exeter offered me exactly that; this is the course to take if you want to learn about what a “society” is, how it is organised and what makes it tick. In your second and third years, you’ll have the opportunity to decide which areas you want to focus on in more depth – the social structure of society as a whole, or the smaller picture of the lives of individuals within that society; your module choices reflect this. For example, if you are interested in how individuals use music in their lives then you can take the Ethnomusicology module. Apply to study BA Sociology and find out for yourself – you won’t regret it.

Sarah Coombes, BA Sociology



# MODULES

**KEY** C = Core  
● = Optional

Please note that the availability of all modules is subject to timetabling constraints, and that not all modules are available every year. The modules detailed below are just examples of those offered recently.

For up-to-date details of all our programmes and modules, please check [www.exeter.ac.uk/ug/sociology](http://www.exeter.ac.uk/ug/sociology)

## Year 1 Modules

Module Name	BA Sociology	BSc Sociology	BA Sociology and Anthropology	BSc Sociology and Criminology	BA Philosophy and Sociology	BA Politics and Sociology	BA Sociology and Modern Languages	BSc Criminology
Imagining Social Worlds: Texts	C	●	C	●	●	●	●	●
Imagining Social Worlds: Artefacts	C	●	C	●	●	●	●	●
Introduction to Social Analysis: Classical Social Theory	C	C	C	C	C	C	C	C
Introduction to Social Analysis: Contemporary Social Theory	C	C	C	C	C	C	C	C
Introduction to Social Anthropology	●	●	C	●	●	●	●	●
Contemporary Society – Themes and Perspectives	C	C	C	C	C	C	C	●
Contemporary Society – Fields and Case Studies	C	C	C	C	C	C	C	●
Social Issues: Crime and Deviance Parts 1 and 2	●	C	●	C	●	●	●	C
Introduction to Social Data	●	C	●	●	●	●	●	C
Introduction to Law for Non-Lawyers	●	●	●	C	●	●	●	●
Research Inquiry in Practice	●	C	●	●	●	●	●	C
First year modules in any subject	●	●	●	●	●	●	●	●

The only compulsory module in Year 3 is the dissertation, unless you are studying the BSc Criminology programme where one of your optional modules must be a Q-Step module chosen from a list. All other modules are optional, and may be taken in either Year 2 or Year 3.

## Year 2 and 3 Optional Modules

Module Name
Globalisation
Immigration in Western Societies
Disability and Society
Media in Society
Ethnomusicology
Introduction to Terrorism Studies
Sport and Society
The Holocaust and Society
Anthropology of Africa
Countercultures
Cultures of War: The Transformation of War
Cyborg Studies
Eat: The Social Self as Consumer
Childhood
Gender and Society
Addiction
Human/Animal Interactions
Sociology of Art and Culture
Health and Illness in Contemporary Society Part 1: Medicine and Social Control
Health and Illness in Contemporary Society Part 2: Bodies in Society
Statistical Methods for Social Data

## Year 2 Modules

Module Name	BA Sociology	BSc Sociology	BA Sociology and Anthropology	BSc Sociology and Criminology	BA Philosophy and Sociology	BA Politics and Sociology	BA Sociology and Modern Languages	BSc Criminology
Ethnography Now	●	C	C	●	●	●	●	●
Into the Field	C	C	C	C	●	●	●	C
Knowing the Social World	C	●	C	C	●	●	●	C
Theoretical Sociology	C	C	●	C	●	●	●	C
Quantitative Data Analysis in Social Science II	C	C	C	C	C	C	C	C



## Year 1 core modules

<b>Imagining Social Worlds 1 and 2: Texts and Artefacts</b>	These modules involve the systematic study of selected problems and questions in sociological research, with a focus on ethnographic and qualitative research. You will learn how artefacts can have different meanings and symbolism to different people, societies, times and cultures, and work in teams to construct and present your own hypotheses about the sociological significance of everyday objects.
<b>Introduction to Social Analysis: Classical Social Theory and Contemporary Social Theory</b>	You will be introduced to the core ideas, theoretical perspectives, methods of investigation and analysis that are distinctive to sociology and cognate disciplines. You will be asking what kind of knowledge of social phenomena it is possible to attain and how far such knowledge can be considered 'scientific' or 'objective', as well as how these issues have been discussed by key social theorists.
<b>Introduction to Social Anthropology</b>	This module introduces the methods and perspectives of social anthropology and engages you in the study of a diversity of societies and cultures. You will encounter a range of ethnographic and theoretical readings and you will be encouraged to develop an anthropological perspective of your own as well as solid research skills, and to think critically and analytically about key questions and problems in studying the worlds of other people and our own.
<b>Contemporary Society – Themes and Perspectives and Fields and Case Studies</b>	These modules complement the other first year modules by concentrating primarily on the subject matter of sociology. You will develop a critical understanding of the rise and transformation of modern societies from the 18th century to the present day, with a particular focus on the last three decades.
<b>Social Issues: Crime and Deviance Parts 1 and 2</b>	You will study crime and criminals, including the causes of criminal behaviour and its consequences for victims and for society as a whole. We pay attention to the role of society in defining and responding to crime as a social problem, and you will explore terrains which are often contested and develop a critical appreciation of the perspectives and methodological principles underpinning them.
<b>Introduction to Social Data</b>	This introductory first-year module covers key concepts in quantitative design and data collection as a basis for understanding such social phenomena. It introduces you to the core statistical ideas that underlie quantitative research and the software packages which are used to produce analyses. It teaches you to think critically about quantitative studies, not only examining how this data is created, but how it can be used in social contexts.

## Year 2 core modules

<b>Ethnography Now</b>	Ethnography provides a means of exploring the ways in which people live, experience and think about their lives, particularly the networks of interaction and meaning they create and inhabit. This module will provide you with an appreciation of the kinds of topics and social issues that ethnographers work on in contemporary culture.
<b>Into the Field</b>	This module introduces you to methods of fieldwork-based inquiry that are strongly featured within the qualitative traditions of sociology and anthropology. The module focuses on learning through practical experimentation and involves the design of your own research project which will help prepare you for your dissertation.
<b>Knowing the Social World</b>	This module explores and provides hands-on experience of a variety of approaches to sociological research such as interview skills, participant observation, and sensory analysis.
<b>Theoretical Sociology</b>	You will survey a variety of perspectives in social theory. Topics can broadly be grouped under two headings, though inter-relations between the two will be explored: general understandings of social relations and processes (such as ethnomethodology and actor-network theory); and big ideas about the shape of contemporary society.
<b>Quantitative Data Analysis in Social Science II</b>	A good understanding of data collection, analysis and interpretation is essential for much empirical research, and is becoming increasingly relevant for the competitive professional world. This module will provide students with knowledge of a wide range of quantitative analytical techniques. Using a combination of lectures, practical demonstrations and practical assignments, this module adopts a "hands on" approach.

## Year 3 core module

<b>Dissertation</b>	The dissertation gives you the opportunity to display your own abilities in researching and communicating your ideas in relation to a topic which really interests you. You may draw on empirical data gathered from library research or your own field work.
---------------------	---

## Year 2 and 3 optional modules

<b>Globalisation</b>	This module looks at the impact globalisation has had on contemporary society and asks whether we are living in a globalised world. After exploring different ways of understanding globalisation historically and theoretically, you will examine various case studies like the media, migration and terrorism, and their implications for identity and culture.
<b>Immigration in Western Societies</b>	The aim of this module is to introduce you to the study of ethnic minorities in Western countries based on the analysis of quantitative data, and to provide you with analytical tools required to reach evidence-based conclusions about immigrants and immigration in a comparative perspective.

# MODULES CONTINUED

<b>Media in Society</b>	Introduces you to the ways sociologists, anthropologists and cultural theorists have conceptualised media in Western society. With the use of specific examples, the module examines key issues in traditional and new media, and provides you with a basis to contextualise and critically appraise social change and collective and individual experiences.	<b>Eat: The Social Self as Consumer</b>	You will look at how the contemporary social self is shaped by its involvement in economic interaction as a consumer and how the changes in the world of shopping represent social change in general. Particular emphasis is put on the way the symbolic construction of subjectivities in consumption relate to the material existence of the self as body and its relation to the materiality of produced and consumed objects.
<b>Ethnomusicology</b>	You will consider music's consequences for social structure and social experience; consider some of the classic and current approaches within the sociology of music; and exemplify these approaches with reference to empirical studies in music sociology.	<b>Childhood</b>	This module, focusing on perceptions of childhood, covers a range of diverse themes such as family life across contexts, the meanings of fairy tales and the influence of Disney.
<b>Introduction to Terrorism Studies</b>	You will learn about the history of political and religiously-motivated violence, the subjective and debated definition of terrorism, as well as rates and trends of terrorism.	<b>Gender and Society</b>	We will consider gender as a social and cultural construction and evaluate the contribution gender studies make to sociology more generally. The module focuses in particular on cultural and non-cognitive dimensions of gender, and places emphasis on grounded theories of gender in daily life.
<b>Sport and Society</b>	Modern sport, and football in particular, provide the main focus of this module. The analysis of modern sport is divided into three sections: the political economy of sport, the players, and the fans. In each of these sections, the transformation of sport up to the present day is analysed with reference to the important literature.	<b>Addiction</b>	What do we mean by 'addiction'? In this module, you will critically analyse the concepts, practices and policy surrounding addiction, dependence, drug use and treatment in contemporary society.
<b>The Holocaust and Society</b>	This module investigates the nature and causes of the Nazi Holocaust and stimulates reflection on the continuing significance of this momentous event for our understanding of human nature and social organisation. The module draws on theories, methodologies and concepts from sociology, social psychology, historical explanation and moral philosophy.	<b>Human/Animal Interactions</b>	From the food we eat and the clothes we wear, to the medicines which sustain us, our lives are inextricably bound up in complex relationships with other animals. This module is primarily concerned with exploring the many and varied interactions which humans have with animals and includes topics such as domestication, the keeping of pets, and conservation.
<b>Anthropology of Africa</b>	Focusing on Sub-Saharan Africa, the module aims to provide a perspective on the shared histories and current predicaments that shape the diverse politics, economics, and social and biological life of the continent.	<b>Disability and Society</b>	Whilst commonly thought of as medical in nature, disability is a social topic that provides surprising insights into a range of sociological topics. You will look across cultures at how normality and deviance are understood, produced and controlled, and examine questions of social inclusion and exclusion, independence and dependence, and the constructedness of both disability and ability.
<b>Countercultures</b>	Using contemporary writings, music and film, you will explore a largely forgotten or misremembered culture close to us in space and time: the counterculture of the 1960s, especially its flourishing in Britain. Exploration topics include: politics, social organisation, the arts, architecture, cybernetics, situationism and revolutionary imagination.	<b>Culture and Perception</b>	What is reality and how do we come to perceive reality in everyday life? This module considers reality as we represent, perceive and experience it through cultural mediators. We investigate realities as situated practices, drawing on and drawing together many things – technologies and objects, people, gestures, meanings and media.
<b>Cultures of War: The Transformation of War</b>	This module examines the transformation of war in the current era from a sociological perspective to provide an insight into the nature of human conflict, the reality of ethnic and religious war, and the transformation of Western armed forces as they engage in new kinds of global operations.	<b>Sociology of Art and Culture</b>	You will learn how cultural issues can be investigated sociologically, explore sociological viewpoints on the nature of artistic creation and other forms of cultural activity and analyse how the terms 'art' and 'popular culture' are used in different social contexts.
<b>Cyborg Studies</b>	This module investigates a decentred and 'posthumanist' sensibility, with the figure of the cyborg – the cybernetic organism, the human/machine – as its icon. It explores the co-evolution of humans, machines, sciences and nature, and includes a very wide range of studies running from past and present science and technology to the arts, management, education, psychiatry, spirituality and the '60s counterculture.	<b>Health and Illness in Contemporary Society Parts 1 and 2</b>	You will critically analyse current academic theories on health, illness and society. Taking an interdisciplinary approach and drawing on texts from medical sociology, health psychology and cultural theory, you will consider why 'health' has become a key social value in contemporary Western society. You'll cover the social patterning of ill-health in terms of health inequalities, as well as considering the collective practices of medicine within formal and informal healthcare.



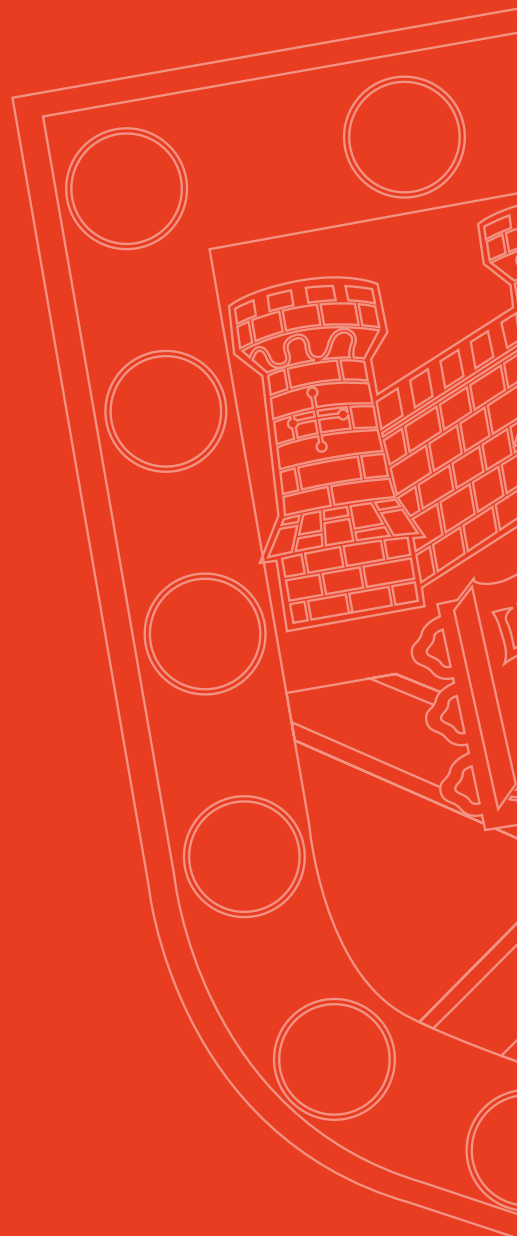
# ABOUT THE UNIVERSITY OF EXETER

1st in the Russell Group for student satisfaction according to the National Student Survey 2014

7th in *The Times and The Sunday Times Good University Guide 2015*

Our teaching is inspired by our research, 82% of which was ranked as world-leading or internationally excellent in the 2014 Research Excellence Framework

Six months after graduation, 93% of our first degree graduates were in employment or further study (HESA 2012/13)



## VISIT US TO FIND OUT MORE

### Open Days

You can register your interest now for our Open Days and receive priority access to book your place\*; visit [www.exeter.ac.uk/opendays](http://www.exeter.ac.uk/opendays)

\* Pre-registration guarantees priority access to the booking system and is not an absolute guarantee of a place at any of our Open Days. Booking is essential and is on a first-come, first-served basis.

Exeter campuses:

Friday 5 June 2015

Saturday 6 June 2015

Saturday 5 September 2015

### Campus Tours

We run campus tours at the Streatham Campus each weekday, and at St Luke's Campus on Tuesdays and Fridays during term time. You'll be shown around by a current student, who'll give you a first-hand account of what it's like to live and study at the University.

Phone: +44 (0)1392 724043

Email: [visitus@exeter.ac.uk](mailto:visitus@exeter.ac.uk)

[www.exeter.ac.uk/ug/sociology](http://www.exeter.ac.uk/ug/sociology)



Find us on Facebook and Twitter:  
[www.facebook.com/exeteruni](http://www.facebook.com/exeteruni)  
[www.twitter.com/uniofexeter](http://www.twitter.com/uniofexeter)

This document forms part of the University's Undergraduate Prospectus. Every effort has been made to ensure that the information contained in the Prospectus is correct at the time of going to print. The University will endeavour to deliver programmes and other services in accordance with the descriptions provided on the website and in this prospectus. The University reserves the right to make variations to programme content, entry requirements and methods of delivery and to discontinue, merge or combine programmes, both before and after a student's admission to the University. Full terms and conditions can be found at [www.exeter.ac.uk/undergraduate/applications/disclaimer](http://www.exeter.ac.uk/undergraduate/applications/disclaimer)

