

Engaged and
Participatory
Research Fund
Awardees

Winter 2024-25



Exeter
INNOVATION



Engaged and Participatory Research Fund Awardees

Congratulations to all the successful applicants for the Engaged and Participatory Research Fund! Read on for some more details about these projects and the applicants behind them.



Dr Helen Birkett (Lead Applicant) (Co-Applicant - Dr Chris Sandal-Wilson)
Faculty of Humanities, Arts, and Social Sciences
External partners - Intercom Trust

In this project, Exeter academics will partner with the leading LGBTQ+ charity in the South West to empower LGBTQ+ young people. The project will fund two university students as LGBTQ+ Schools Champions, who will be supported to deliver creative workshops in school settings which draw on historical research from the HLF-funded Section 28 and its afterlives project. The workshops aim to promote the wellbeing of LGBTQ+ pupils by connecting them to LGBTQ+ history, and to real-life role models. The project will evaluate this approach via feedback solicited throughout, with findings disseminated through a report co-authored with the LGBTQ+ Champions.

Sam Godfrey (Lead Applicant) (Co-Applicant - Dr Daniel Fountain)
Faculty of Humanities, Arts, and Social Sciences
External partners - House of Annetta

The aim of this interdisciplinary project is to create an exhibition and community opportunities around the subject of trans domesticity and housing justice. Through the engagement of trans artists, trans people looking for support and information, and the wider public this work will inform research on trans specific collaborative strategies and bring together trans creative practices with advocacy and grassroots work being done around trans housing.



Dr Federico Botta (Lead Applicant)
Faculty of Environment, Science, and Economy
External partners - Exeter Science Centre

This project, in collaboration with Exeter Science Centre, will explore the overlaps between Federico's research on transport, accessibility and 15-minute cities, and the needs and desires of the local community. The team will run consultations to discuss issues relevant to the community, and this discussion will be used to shape the direction of future research. This project builds on the existing collaboration between Federico and Exeter Science Centre, which was initiated as part of an exhibition at Exeter's Royal Albert Memorial Museum.

Website - [Public Engagement](#)
Email - per@exeter.ac.uk
LinkedIn - [Regional Engagement](#)



Exeter
INNOVATION

Engaged and Participatory Research Fund Awardees

Professor Federico Caprotti (Lead Applicant) (Co-Applicant - Dr Whitney Pailman)
Faculty of Environment, Science, and Economy

External partners - African Climate and Development Initiative (ACDI), University of Cape Town

The aim of this project is to explore the linkages between community resilience, entrepreneurship, economic mobility and navigating infrastructure disruptions in urban, informal settlements in South Africa. This will involve a participatory workshop with residents of Qandu-Qandu in Cape Town. The novelty of this project lies in developing a nexus perspective around these topics and embedding community voices on niche off-grid infrastructure (like solar micro-grids), navigating infrastructure disruptions and pathways to economic mobility through entrepreneurship.



Dr Tomas Chaigneau (Lead Applicant) (Co-Applicant - Giulia Nicolini)
Faculty of Environment, Science, and Economy

External partners - The Seaweed Institute

This project aims to increase the role of local communities in shaping the future of Cornish seaweed farming - specifically, through improving how licensing and regulatory organisations involve Cornish communities in processes of developing and approving plans for prospective seaweed farms. The project will collaborate with community groups, licensing and regulatory organisations, and prospective seaweed farmers. It looks to create an approach to inclusive community engagement that licensing and regulatory bodies could adopt and adapt across different locations.

Dr Tim Hughes (Lead Applicant) (Co-Applicants - Jaye and Tim Brighton)
Faculty of Environment, Science, and Economy

External partners - Loveland & Falmouth Food Co-op

This is a participatory action research project with the community growing initiative Loveland, part of Falmouth Food Co-op. Loveland aims to enhance wellbeing, community resilience, local food production, biodiversity, and nature-based learning. Building on an existing partnership, this project responds to identified community needs and priorities, and brings students and the community together to collectively envision and enact sustainable food, land and care practices, and to broaden local awareness and participation.



Website - [Public Engagement](#)
Email - per@exeter.ac.uk
LinkedIn - [Regional Engagement](#)



Engaged and Participatory Research Fund Awardees

Ange Brennan (Lead Applicant) (Co-Applicant - Lauren Selway)

Faculty of Health and Life Sciences

External partners - Exeter College

This project aims to explore the interface between medical mycology and textiles; combining cutting-edge scientific research with artistic flare. Researchers from The Centre for Medical Mycology (CMM) will work with textile students to raise awareness of deadly fungal diseases and the impact that fungus has on us and our environment. Each student will then be tasked with creating a piece of work that reflects medical mycology. Researchers from CMM will visit the students at the college to interact with the works in progress, with both groups sharing knowledge about new ways of seeing the world of mycology.



Dr Safi Darden and Dr Melody Kuziwa Jombe (Lead Applicants)

Faculty of Health and Life Sciences

External partners - St. James School & West Exe School

Following a successful pilot, this project aims to investigate and develop actions to effectively mitigate the effects of the lack of Black representation in secondary school education and their short and long-term implications for education outcomes. It will do so through a 12-week engagement programme for Black high school pupils led by Black academics and university students. The programme hosts pupils from partner schools on UoE campuses during one afternoon per week, engaging them in activities. Across sessions, the academics and university students support participants in developing and carrying out group projects according to their interests and ideas for fostering change. Participants then lead a dissemination session based around their projects at the end of the programme.

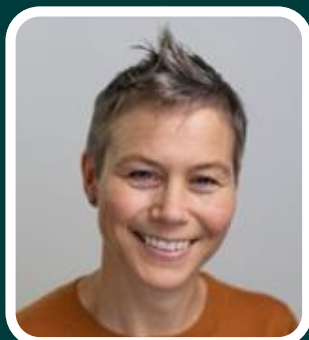


Lucy Kirkland (Lead Applicant) (Co-Applicant - Dr Tanimola Martins)

Faculty of Health and Life Sciences

External partners - Inclusive Exeter, FORCE & The Redeemed Christian Church of God (RCCG) Exeter

This project plans to build, expand and maintain connections with six global majority communities in Exeter: Filipino, Chinese, Afghan, Bangladeshi, Nigerian, and Caribbean. Community conversations about cancer will be encouraged through a series of six events which address cancer related fears and fatalism such as cancer symptoms, risk factors, help-seeking from GPs and the hospital experience. The workshops will create a space where diverse communities feel seen, heard and empowered, as people share their lived experiences of cancer with each other, creating cohesion, cultural exchange, and building trust for authentic patient and public involvement relationships to emerge.



Dr Kristin Liabo (Lead Applicant) (Co-Applicants- Professor Heike

Roms, Beccy Summers, and Dr Kerrie Schaefer)

Faculty of Health and Life Sciences

External partners - MEDS Theatre and Spire College

This project will explore the use of arts-based approaches and school-university exchange visits to co-design research on support for students with emotional-based school avoidance (EBSA).

Website - [Public Engagement](#)

Email - per@exeter.ac.uk

LinkedIn - [Regional Engagement](#)



Exeter
INNOVATION

Engaged and Participatory Research Fund Awardees

Dr Louise Venables (Lead Applicant) (Co-Applicant - Dr Daniel Derbyshire)

Faculty of Health and Life Sciences

External partners - Sideshore Community

Eco-hubs are community spaces where groups gather to promote environmental sustainability, foster community engagement and encourage pro-environmental behaviours. One of a few national eco-hubs opened in Exmouth in May 2024. Anecdotal evidence of positive impacts have sparked a collective desire for formal research. University researchers will collaborate with eco-hub group leaders and users to assess the free-to-access eco-hub's role in improving pro-environmental awareness and behaviours, community engagement in environmental initiatives, perceived community inclusion, and mental health, wellbeing and eco-anxiety. The project will also aim to identify barriers and facilitators to inclusive and diverse eco-hub participation, and provide evidence for policy and practice, potentially advocating for wider adoption of eco-hubs.



Civic University Agreements (CUA) Aligned Projects:

Two additional projects, short-listed from the EPR Fund, were selected to receive funding from a separate source as they aim to tackle some of the ambitions of the Exeter and Cornwall CUAs.



Dr Jo Garrett (Lead Applicant) (Co-Applicant - Dr Amber Griffiths, Dave Griffiths)

Faculty of Health and Life Sciences

External partners - Then Try This

The aim of the project is to develop the Then Try This open source SmogOff air pollution sensor system to be easier for community groups to deploy independently. Three simplified sensor systems will be built and calibrated against Cornwall Council's reference station to ensure that the data can be used for policy advocacy. Three community groups will be supported to develop their locally relevant tests and to analyse the data for their own purposes, which will be followed by interviews about their experiences and outcomes.

Professor Manuela Barreto (Lead Applicant) (Co-Applicant - Camilla Rooney)

Faculty of Health and Life Sciences

External partners - Waffle House, Wellmoor, Ottery Help Scheme, Devon Community Foundation, Royal Devon University Healthcare NHS Foundation Trust, & Neighbourly Lab

The aim of the project is to co-research local needs and how they can be met to bolster social infrastructure and increase connection. The current project builds on established NHS-funded research that aims to strengthen social health across the area of the Eastern Local Care Partnership. The cross-sector partnership includes local VCSE organisations currently working to identify the existing roles and functions that enable the building of social infrastructure in the area.



Website - [Public Engagement](#)

Email - per@exeter.ac.uk

LinkedIn - [Regional Engagement](#)



Exeter
INNOVATION