

Learning Spaces Support: Seminar Room Control

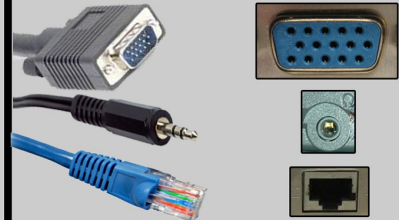
STEP 1 Get Started



Locate the remote control to operate system



Turn on the projector or screen

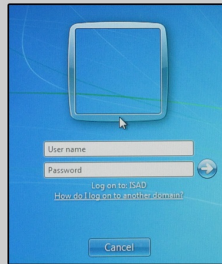


Connect Laptop if required

STEP 2 Choose what you wish to use



Select which source you wish to display

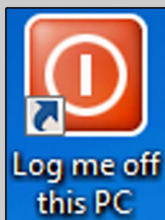


If using the PC, logon with your University of Exeter account



Insert which media you wish to use

STEP 3 When finished



Log off the PC using the Desktop icon



Turn off the projector by pressing the ON button twice



Eject your media and disconnect your laptop